



**VEEKAY**

**STAINLESS PIPE FITTINGS**

5891862

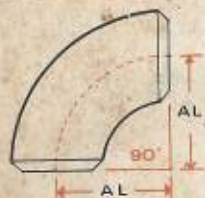


# VEEKAY SEAMLESS/WELDED BUTT WELDED PIPE FITTINGS

MADE IN ACCORDANCE WITH MSS-SP-43 • A.N.S.I. • B. 16.9 & BS 1640

## LONG RADIUS

90° ELBOWS



45° ELBOWS

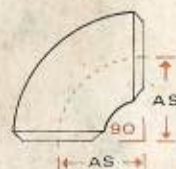


180° RETURN BENDS



## SHORT RADIUS

90° ELBOWS



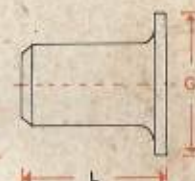
180° RETURN BENDS



CAPS



LAP JOINT STUB ENDS



MATERIAL STANDARD: ASTM A 403 GR. WP. 304, 316, 321, 304 L, 316 L, ETC.

CONSTRUCTION: (a) SEAMLESS (b) ONE SEAM WELDED (c) TWO HALVES WELDED.

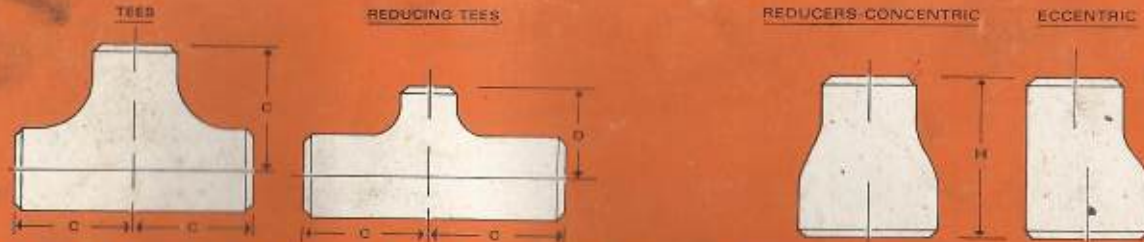
NOM. BORE	PIPE O.D.	AL	B	KL	AS	KS	E	E1	L	G
									ASA SHORT	
1/2"	0.840	1 1/2"	5/8"	1 7/8"			1"		3"	1 3/8"
3/4"	1.050	1 1/8"	7/16"	1 11/16"			1 1/2"		3" 2"	1 11/16"
1"	1.315	1 1/2"	7/8"	2 3/16"	1"	1 5/8"	1 1/2"		4" 2"	2"
1 1/4"	1.660	1 7/8"	1"	2 3/4"	1 1/4"	2 1/16"	1 1/2"		4" 2"	2 1/2"
1 1/2"	1.900	2 1/4"	1 1/8"	3 1/4"	1 1/2"	2 7/16"	1 1/2"		4" 2"	2 7/8"
2"	2.375	3"	1 3/8"	4 3/16"	2"	3 3/16"	1 1/2"	2 1/2"	6" 2 1/2"	3 5/8"
2 1/2"	2.875	3 3/4"	1 3/4"	5 3/16"	2 1/2"	3 15/16"	1 1/2"	3"	6" 2 1/2"	4 1/8"
3"	3.500	4 1/2"	2"	6 1/4"	3"	4 3/4"	2"	2 1/2"	6" 2 1/2"	5"
3 1/2"	4.000	5 1/4"	2 1/4"	7 1/4"	3 1/2"	5 1/2"	2 1/2"	3"	6" 3"	5 1/2"
4"	4.500	6"	2 1/2"	8 1/4"	4"	6 1/4"	2 1/2"	3"	6" 3"	6 3/16"
5"	5.563	7 1/2"	3 1/8"	10 5/16"	5"	7 3/4"	3"	3 1/2"	8" 3"	7 5/16"
6"	6.625	9"	3 3/8"	12 5/16"	6"	9 5/16"	3 1/2"	4"	8" 3 1/2"	8 1/2"

NOM. BORE	PIPE O.D.	AL	B	KL	AS	KS	E	E1	L	G
									ASA SHORT	
8"	8.625	12"	5"	16 5/16"	8"	12 5/16"	4"	5"	8" 4"	10 5/8"
10"	10.750	15"	6 1/4"	20 3/8"	10"	15 3/8"	5"	6"	10" 5"	12 3/4"
12"	12.750	18"	7 1/2"	24 3/8"	12"	18 3/8"	6"	7"	10" 6"	15"
14"	14.000	21"	8 3/4"	28 1/4"	14"	21 6 1/2"	7 1/2"	8"	12"	16 1/4"
16"	16.000	24"	10"	32 1/4"	16"	24 7"	8"	9"	12"	18 1/2"
18"	18.000	27"	11 1/4"	36 1/8"	18"	27 8"	9"	10"	12"	21"
20"	20.000	30"	12 1/2"	40 1/8"	20"	30 9"	10"	11"	12"	23"
24"	24.000	36"	15"	48 1/4"	24"	36 10 1/2"	12"	12"	12"	27 1/4"
26"	26.000	39"	16"	52 1/4"	26"	39 10 1/2"				
30"	30.000	45"	18 1/2"	60 1/4"	30"	45 10 1/2"				
36"	36.000	54"	22 1/2"	72 1/4"	36"	54 10 1/2"				

All Dimensions are given in inches

# VEEKAY SEAMLESS/WELDED BUTT WELDED PIPE FITTINGS

MADE IN ACCORDANCE WITH MSS-SP-43 • A.N.S.I. B. 16.9 & BS 1640



MATERIAL STANDARD: ASTM A 403 GR. WP. 304, 316, 321 304 L, 316 L, ETC.

CONSTRUCTION: (a) SEAMLESS (b) ONE SEAM WELDED (c) TWO HALVES WELDED.

NOMINAL BORE	OUTLET REDUCT	C	D	H
1"	1"	1 1/2"	.	.
1"	3/4"	1 1/2"	1 1/2"	2"
1"	1/2"	1 1/2"	1 1/2"	2"
1 1/4"	1 1/4"	1 7/8"	.	.
1 1/4"	1"	1 7/8"	1 7/8"	2"
1 1/4"	3/4"	1 7/8"	1 7/8"	2"
1 1/4"	1/2"	1 7/8"	1 7/8"	2"
1 1/2"	1 1/2"	2 1/4"	2"	.
1 1/2"	1 1/4"	2 1/4"	2 1/4"	2 1/2"
1 1/2"	1"	2 1/4"	2 1/4"	2 1/2"
1 1/2"	3/4"	2 1/4"	2 1/4"	2 1/2"
1 1/2"	1/2"	2 1/4"	2 1/4"	2 1/2"
2"	2"	2 3/4"	.	.
2"	1 1/2"	2 3/4"	2 1/4"	3"
2"	1 1/4"	2 3/4"	2 1/4"	3"
2"	1"	2 3/4"	2"	3"

NOMINAL BORE	OUTLET REDUCT	C	D	H
2"	3/4"	2 1/2"	1 1/4"	3"
2 1/2"	2 1/2"	3"	2 3/4"	.
2 1/2"	2"	3"	2 1/4"	3 1/2"
2 1/2"	1 1/2"	3"	2 3/8"	3 1/2"
2 1/2"	1 1/4"	3"	2 1/2"	3 1/2"
2 1/2"	1"	3"	2 1/4"	3 1/2"
3"	3"	3 3/8"	.	.
3"	2 1/2"	3 3/8"	3 1/4"	3 1/2"
3"	2"	3 3/8"	3"	3 1/2"
3"	1 1/2"	3 3/8"	2 1/4"	3 1/2"
3"	1 1/4"	3 3/8"	2 1/4"	3 1/2"
3 1/2"	3 1/2"	3 3/4"	.	.
3 1/2"	3"	3 3/4"	3 1/8"	4"
3 1/2"	2 1/2"	3 3/4"	3 1/2"	4"
3 1/2"	2"	3 3/4"	3 1/2"	4"
3 1/2"	1 1/2"	3 3/4"	3 1/2"	4"

NOMINAL BORE	OUTLET REDUCT	C	D	H
4"	4"	4 1/8"	.	.
4"	3 1/2"	4 1/8"	4"	4"
4"	3"	4 1/8"	3 7/8"	4"
4"	2 1/2"	4 1/8"	3 3/4"	4"
4"	2"	4 1/8"	3 1/2"	4"
4"	1 1/2"	4 1/8"	3 3/8"	4"
5"	5"	4 7/8"	.	.
5"	4"	4 7/8"	4 5/8"	5"
5"	3 1/2"	4 7/8"	4 1/2"	5"
5"	3"	4 7/8"	4 3/8"	5"
5"	2 1/2"	4 7/8"	4 1/4"	5"
5"	2"	4 7/8"	4 1/8"	5"
6"	6"	5 5/8"	.	.
6"	5"	5 5/8"	5 3/8"	5 1/2"
6"	4"	5 5/8"	5 1/8"	5 1/2"
6"	3 1/2"	5 5/8"	5"	5 1/2"

NOMINAL BORE	OUTLET REDUCT	C	D	H
6"	3"	5 5/8"	4 7/8"	5 1/2"
6"	2 1/2"	5 5/8"	4 3/4"	5 1/2"
8"	8"	7"	.	.
8"	6"	7"	6 5/8"	6"
8"	5"	7"	6 3/8"	6"
8"	4"	7"	6 1/8"	6"
8"	3 1/2"	7"	6"	6"
10"	10"	8 1/2"	.	.
10"	8"	8 1/2"	8"	7"
10"	6"	8 1/2"	7 5/8"	7"
10"	5"	8 1/2"	7 1/2"	7"
10"	4"	8 1/2"	7 1/4"	7"
12"	12"	10"	.	.
12"	10"	10"	9 1/2"	8"
12"	8"	10"	9"	8"
12"	6"	10"	8 5/8"	8"

All Dimensions are given in inches



# VEEKAY SEAMLESS/WELDED BUTT WELDED PIPE FITTINGS

CONT: EQUAL TEES • REDUCING TEES • REDUCERS • CONCENTRIC  
ECCENTRIC

NOM. BORE	OUTLET REDUCT	C	D	H
12"	5"	10"	8 $\frac{1}{2}$ "	8"
14"	14"	11"	.	.
14"	12"	11"	10 $\frac{1}{2}$ "	13"
14"	10"	11"	10 $\frac{1}{2}$ "	13"
14"	8"	11"	9 $\frac{3}{4}$ "	13"
14"	6"	11"	9 $\frac{3}{4}$ "	13"
16"	16"	12"	.	.
16"	14"	12"	12"	14"
16"	12"	12"	11 $\frac{1}{2}$ "	14"
16"	10"	12"	11 $\frac{1}{2}$ "	14"
16"	8"	12"	10 $\frac{1}{2}$ "	14"
16"	6"	12"	10 $\frac{1}{2}$ "	14"
18"	18"	13 $\frac{1}{2}$ "	.	.

NOM. BORE	OUTLET REDUCT	C	D	H
18"	16"	13 $\frac{1}{2}$ "	13"	15"
18"	14"	13 $\frac{1}{2}$ "	13"	15"
18"	12"	13 $\frac{1}{2}$ "	12 $\frac{3}{4}$ "	15"
18"	10"	13 $\frac{1}{2}$ "	12 $\frac{1}{4}$ "	15"
18"	8"	13 $\frac{1}{2}$ "	11 $\frac{3}{4}$ "	15"
20"	20"	15"	.	.
20"	18"	15"	14 $\frac{1}{2}$ "	20"
20"	16"	15"	14"	20"
20"	14"	15"	14"	20"
20"	12"	15"	13 $\frac{5}{8}$ "	20"
20"	10"	15"	13 $\frac{1}{8}$ "	20"
20"	8"	15"	12 $\frac{3}{4}$ "	20"
24"	24"	17"	.	.

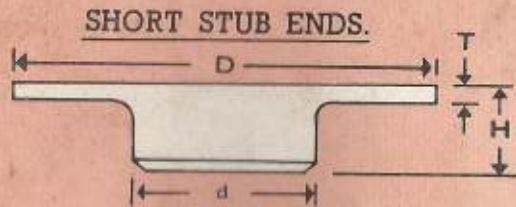
NOMI BORE	OUTLET REDUCT	C	D	H
24"	20"	17"	17"	20"
24"	18"	17"	16 $\frac{1}{2}$ "	20"
24"	16"	17"	16"	20"
24"	14"	17"	16"	20"
24"	12"	17"	15 $\frac{1}{2}$ "	20"
24"	10"	17"	15 $\frac{1}{2}$ "	20"
26"	26"	19 $\frac{1}{2}$ "	19 $\frac{1}{2}$ "	.
26"	24"	19 $\frac{1}{2}$ "	19"	24"
26"	20"	19 $\frac{1}{2}$ "	18"	24"
26"	18"	19 $\frac{1}{2}$ "	17 $\frac{1}{2}$ "	24"
26"	16"	19 $\frac{1}{2}$ "	17"	24"
26"	14"	19 $\frac{1}{2}$ "	17"	24"
26"	12"	19 $\frac{1}{2}$ "	16 $\frac{1}{2}$ "	24"

NOMI BORE	OUTLET REDUCT	C	D	H
30"	30"	22"	22"	.
30"	26"	22"	21 $\frac{1}{2}$ "	24"
30"	24"	22"	21"	24"
30"	22"	22"	20"	24"
30"	20"	22"	19 $\frac{3}{4}$ "	24"
30"	18"	22"	19"	24"
30"	16"	22"	19"	24"
36"	36"	26 $\frac{1}{2}$ "	26 $\frac{1}{2}$ "	24"
36"	30"	26 $\frac{1}{2}$ "	25"	24"
36"	24"	26 $\frac{1}{2}$ "	24"	24"
36"	20"	26 $\frac{1}{2}$ "	23"	24"
.	.	.	.	.
.	.	.	.	.

All Dimensions are given in inches



# VEEKAY SEAMLESS/WELDED BUTT WELDED PIPE FITTINGS



## TABLE OF TOLERANCES. A.N.S.I. B. 16.9

(Wrought Steel Butt Welding Fittings)

ALL FITTINGS				S.P.S.M.S. ELBOWS & TEES	REDUCERS & LAP JOINT STUB ENDS	180° RETURNS			CAPS	LAP-JOINT STUB ENDS			
NOMINAL PIPE SIZE	OUTSIDE DIAMETER AT WELDING ENDS	INSIDE DIAMETER AT END	WALL THICKNESS	CENTRE TO END A, B, C, D	OVER ALL LENGTH L, H	CENTRE TO CENTRE 7/8" TO 24"	BACK TO FACE K1-K3	ALIGNMENT OF ENDS U	OVERALL LENGTH E	OUTSIDE DIAMETER G	THICKNESS OF LAP T	FILLEE RADIUS OF LAP R	OUTSIDE DIAMETER OF LAP F
1/2 - 2 1/2	+0.015 -0.02	± 1/32	NOT LESS THAN 87 1/2%	± 1/16	± 1/16	± 1/4	± 1/4	± 1/32	± 1/8	+0 -1/32	+1/16 -0	+0 -1/32	+0 -1/32
3 - 3 1/2	± 1/16	± 1/16	OF	± 1/16	± 1/16	± 1/4	± 1/4	± 1/32	± 1/8	+0 -1/32	+1/16 -0	+0 -1/32	+0 -1/16
4	± 1/16	± 1/16	NOMINAL	± 3/32	± 3/32	± 1/2	± 1/4	± 1/32	± 1/4	+0 -1/16	+1/16 -0	+0 -1/16	+0 -1/16
5-8	+0.022 -0.036	± 1/16	OF	± 1/16	± 1/16	± 1/4	± 1/4	± 1/32	± 1/4	+0 -1/32	+1/16 -0	+0 -1/16	+0 -1/16
10-18	+0.032 -0.04	± 1/8	NOMINAL	± 3/32	± 3/32	± 3/8	± 1/4	± 1/32	± 1/4	+0 -1/16	+1/16 -0	+0 -1/16	+0 -1/16
20-24	+0.036 -0.048	± 3/16	THICKNESS	± 3/32	± 3/32	± 3/8	± 1/4	± 1/16	± 1/4	+0 -1/16	+1/16 -0	+0 -1/16	+0 -1/16

PIPE SIZE		O.D. STD. PIPE		N.B. SCH. PIPE		O.C. PIPE		HEIGHT
INCH	MM	D. MM	d. mm	D. MM	d. mm	D. MM	d. mm	MM
3/8	10	40	18	40	18	40	12.7	8
1/2	15	45	20	45	20.3	45	19	8
3/4	20	58	25	54	26.2	54	19	8
1"	25	68	30	64	31.4	64	25.4	10
1 1/4	32	78	38	74	37.3	74	32	12
1 1/2	40	88	45	84	41.9	84	38	12
2"	50	102	57	102	50.9	102	51	16
2 1/2	65	122	70	122	71.1	122	63.5	16
3"	80	138	80	138	80.9	138	76.2	18
4"	100	158	100	158	114.3	158	102	20
6"	150	188	150	188	147.2	188	127	25
8"	200	212	175	212	168.4	212	182.4	28
10"	250	268	225	268	212.2	268	203.2	30
12"	300	370	318	370	317.7	370	284	35
							305	40

## TABLE OF TOLERANCES. A.N.S.I. M.S.S. S.P. 43

(Wrought Stainless Steel Butt Welding Fittings)

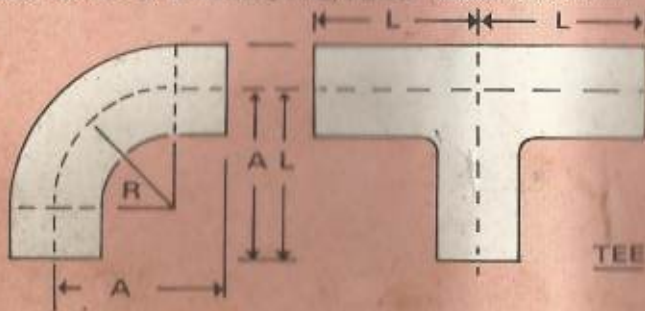
ALL FITTINGS				S.P.S.M.S. ELBOWS & TEES	REDUCERS & LAP JOINT STUB ENDS	180° RETURNS			CAPS	LAP-JOINT STUB ENDS	
NOMINAL PIPE SIZE	OUTSIDE DIAMETER AT WELDING ENDS	WALL THICKNESS	CENTRE TO END A, B, C, D	OVER ALL LENGTH L, H	CENTRE TO CENTRE 3/4" TO 24"	BACK TO FACE K1-K3	ALIGNMENT OF ENDS U	OVERALL LENGTH E	FILLEE RADIUS OF LAP R	OUTSIDE DIAMETER OF LAP G	OUTSIDE DIAMETER OF LAP F
1/2 - 1 1/2	± 1/32	NOT LESS THAN 87 1/2%	± 1/16	± 1/16	± 1/4	± 1/4	± 1/32	± 1/8	+0 -1/32	+0 -1/32	+0 -1/32
2 - 3 1/2	± 1/32	OF	± 1/16	± 1/16	± 1/4	± 1/4	± 1/32	± 1/8	+0 -1/32	+0 -1/32	+0 -1/32
4	± 1/32	87 1/2%	± 1/16	± 1/16	± 1/4	± 1/4	± 1/32	± 1/8	+0 -1/16	+0 -1/32	+0 -1/32
5-8	+0.015 -0.02	OF	± 1/16	± 1/16	± 1/4	± 1/4	± 1/32	± 1/4	+0 -1/16	+0 -1/32	+0 -1/32
10-18	+0.027 -0.038	NOMINAL	± 3/32	± 3/32	± 3/8	± 1/4	± 1/16	± 1/4	+0 -1/16	+0 -1/16	+0 -1/16
20-24	+0.036 -0.048	THICKNESS	± 3/32	± 3/32	± 3/8	± 1/4	± 1/16	± 1/4	+0 -1/16	+0 -1/16	+0 -1/16

PIPE O.D.	RADIUS R	CENTRE TO FACE A	TEE L	THICKNESS	PIPE O.D.	RADIUS R	CENTRE TO FACE A	TEE L	THICKNESS
25	33	55	65	1.05, 1.25	32	67.5	82	82	1.05, 1.25
32	40.5	24.5	65	1.05, 1.25	38	75	105	105	1.05, 1.25
38	45.5	70	70	1.05, 1.25		75	110	110	1.05, 1.25

ALL DIMENSIONS ARE GIVEN IN MM.

I. D.F./S.M.S. STD. S. R. ELBOWS/TEES available in S. S. 304/316

ELBOW

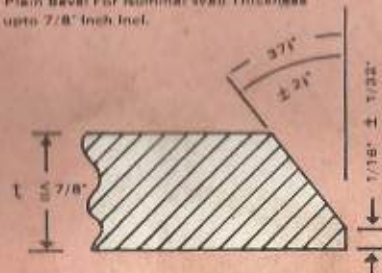


TEE

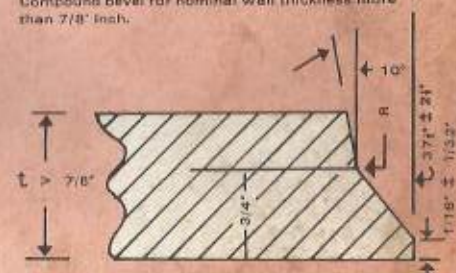
## WELDING BEVEL STANDARD-A.N.S.I. B. 16.9 A.N.S.I. B.16.28

(In accordance with A.N.S.I. B. 16.25)

Plain Bevel For Nominal Wall Thickness upto 7/8" Inch Incl.



Compound bevel for nominal wall thickness more than 7/8" Inch.



All Dimensions are given in inches

# VEEKAY SEAMLESS/WELDED BUTT WELDED PIPE FITTINGS

Dimensions of Seamless & Welded STAINLESS STEEL PIPES A.N.S.I. B.36.19

3750232

## THICKNESS TABLE

NOM. PIPE SIZE	Outside Diameter		Sch. 5		Sch. 10		Sch. 20		Sch. 30		Std. WT.		Sch. 40		Sch. 60		XS		Sch. 80		Sch. 100		Sch. 120		Sch. 140		Sch. 160		XXS			
	inch	mm	inch	mm	inch	mm	inch	mm	inch	mm	inch	mm	inch	mm	inch	mm	inch	mm	inch	mm	inch	mm	inch	mm	inch	mm	inch	mm	inch	mm		
1/2"	0.840	21.34	0.065	1.65	0.083	2.11	*	*	*	*	0.109	2.77	0.109	2.77	*	*	0.147	3.73	0.147	3.73	*	*	*	*	*	*	*	*	0.187	4.75	0.214	7.47
3/4"	1.050	26.67	0.065	1.65	0.083	2.11	*	*	*	*	0.113	2.87	0.113	2.87	*	*	0.154	3.91	0.154	3.91	*	*	*	*	*	*	*	*	0.218	5.54	0.308	7.87
1"	1.315	33.40	0.065	1.65	0.109	2.77	*	*	*	*	0.133	3.38	0.133	3.38	*	*	0.175	4.55	0.175	4.55	*	*	*	*	*	*	*	*	0.250	6.35	0.358	9.09
1.1/4"	1.660	42.16	0.065	1.65	0.109	2.77	*	*	*	*	0.140	3.56	0.140	3.56	*	*	0.191	4.85	0.191	4.85	*	*	*	*	*	*	*	*	0.250	6.35	0.382	9.70
1.1/2"	1.900	48.26	0.065	1.65	0.109	2.77	*	*	*	*	0.145	3.68	0.145	3.68	*	*	0.200	5.08	0.200	5.08	*	*	*	*	*	*	*	*	0.281	7.14	0.400	10.16
2"	2.375	60.33	0.065	1.65	0.109	2.77	*	*	*	*	0.154	3.91	0.154	3.91	*	*	0.218	5.54	0.218	5.54	*	*	*	*	*	*	*	*	0.343	8.71	0.436	11.07
2.1/2"	2.875	73.03	0.083	2.11	0.120	3.05	*	*	*	*	0.203	5.16	0.203	5.16	*	*	0.276	7.01	0.276	7.01	*	*	*	*	*	*	*	*	0.175	9.53	0.552	14.02
3"	3.500	88.90	0.083	2.11	0.120	3.05	*	*	*	*	0.216	5.49	0.216	5.49	*	*	0.300	7.62	0.300	7.62	*	*	*	*	*	*	*	*	0.438	11.13	0.600	15.24
3.1/2"	4.000	101.60	0.083	2.11	0.120	3.05	*	*	*	*	0.226	5.74	0.226	5.74	*	*	0.318	8.08	0.318	8.08	*	*	*	*	*	*	*	*	0.636	16.16	*	*
4"	4.500	114.30	0.083	2.11	0.120	3.05	*	*	*	*	0.237	6.02	0.237	6.02	*	*	0.337	8.56	0.337	8.56	*	*	0.438	11.13	*	*	0.531	13.49	0.674	17.12		
5"	5.563	141.30	0.109	2.77	0.134	3.40	*	*	*	*	0.258	6.55	0.258	6.55	*	*	0.375	9.53	0.375	9.53	*	*	0.500	12.70	*	*	0.625	15.88	0.750	19.05		
6"	6.625	168.28	0.109	2.77	0.134	3.40	*	*	*	*	0.280	7.11	0.280	7.11	*	*	0.432	10.97	0.432	10.97	*	*	0.562	14.1	*	*	0.710	18.24	0.864	21.95		
8"	8.625	219.08	0.109	2.77	0.148	3.76	0.250	6.35	0.277	7.04	0.322	8.18	0.322	8.18	0.406	10.31	0.500	12.70	0.500	12.70	0.593	15.06	0.718	18.24	0.812	20.62	0.906	23.01	0.875	22.23		
10"	10.750	273.05	1.134	3.40	0.165	4.19	0.250	6.35	0.307	7.80	0.365	9.27	0.365	9.27	0.500	12.70	0.500	12.70	0.593	15.06	0.718	18.24	0.843	21.41	1.000	25.40	1.125	28.53	*	*		
12"	12.750	323.85	0.165	4.19	0.180	4.57	0.250	6.35	0.330	8.38	0.375	9.53	0.406	10.31	0.562	14.27	0.500	12.70	0.687	17.46	0.843	21.41	1.000	25.40	1.125	28.58	1.312	33.32	*	*		
14"	14.000	355.80	*	*	0.250	6.35	0.312	7.92	0.375	9.53	0.375	9.53	0.438	11.13	0.593	15.06	0.500	12.70	0.750	19.05	0.937	23.80	1.093	27.76	1.250	31.75	1.406	35.71	*	*		
16"	16.000	406.40	*	*	0.250	6.35	0.312	7.92	0.375	9.53	0.375	9.53	0.500	12.70	0.656	16.66	0.510	12.70	0.613	15.57	1.031	26.19	1.218	30.94	1.438	36.53	1.593	40.48	*	*		
18"	18.000	457.20	*	*	0.250	6.35	0.312	7.92	0.438	11.13	0.375	9.53	0.562	14.27	0.750	19.05	0.500	12.70	0.937	23.80	1.156	29.36	1.375	34.93	1.562	39.67	1.791	45.24	*	*		
20"	20.000	508.00	*	*	0.250	6.35	0.375	9.53	0.500	12.70	0.375	9.53	0.593	15.06	0.812	20.62	0.500	12.70	1.031	26.19	1.381	32.54	1.510	38.10	1.750	44.45	1.968	49.99	*	*		
22"	22.000	558.80	*	*	0.250	6.35	0.375	9.53	0.500	12.70	0.375	9.53	*	*	0.875	22.23	0.500	12.70	1.125	28.57	1.375	34.92	1.525	41.27	1.875	47.62	2.125	53.97	*	*		
24"	24.000	609.60	*	*	0.250	6.35	0.375	9.53	0.562	14.27	0.375	9.53	0.687	17.46	0.968	24.59	0.500	12.70	1.218	30.94	1.511	38.69	1.812	46.02	2.062	52.37	2.343	59.51	*	*		
26"	26.000	660.40	*	*	0.312	7.92	0.500	12.70	*	*	0.375	9.53	*	*	*	*	0.500	12.70	*	*	*	*	*	*	*	*	*	*	*	*	*	
28"	28.000	711.20	*	*	0.312	7.92	0.500	12.70	0.625	15.87	0.375	9.53	*	*	*	*	0.500	12.70	*	*	*	*	*	*	*	*	*	*	*	*	*	
30"	30.000	762.00	*	*	0.312	7.92	0.500	12.70	0.625	15.87	0.375	9.53	*	*	*	*	0.500	12.70	*	*	*	*	*	*	*	*	*	*	*	*	*	
32"	32.000	812.80	*	*	0.312	7.92	0.500	12.70	0.625	15.87	0.375	9.53	0.688	17.47	*	*	0.500	12.70	*	*	*	*	*	*	*	*	*	*	*	*	*	
36"	36.000	914.40	*	*	*	*	0.500	12.70	*	*	0.375	9.53	*	*	*	*	0.500	12.70	*	*	*	*	*	*	*	*	*	*	*	*	*	

All Dimensions are given in inches

# VEEKAY

## BUTT WELDED



### STAINLESS STEEL PIPE FITTINGS

Manufacturing Std : VEEKAY Fittings are manufactured in accordance with ANSI B. 16.9, & MSS-SP-43.  
Also as per BS 1640 Part II As per ASTM A 403

Tolerances : Dimensional Tolerance as per ANSI B. 16.9 MSS-SP-43.

Materials : In accordance & to ASTM A 403, WP 304 316, 304 L, 316 L.

Process : Cold bending, Forming Argon Arc Welding & Cold pressing Stress Released &  
★ Solution Annealed

Test & Inspection : (1) Material properties are tested by Physical & Chemical analysis (2) Dimensional  
(3) Dye Penetrant Check (4) Radiography (5) Ultra Sonic (N.B. 3, 4, & 5 tests are optional)

Marking : As per MSS-SF-54, & ANSI B. 16.9

Heat Treatment : All cold worked fittings are stress relieved at 950° C. & welded fittings solution  
annealed at 1050°c. & water Quenched ★

End Preparation : VEEKAY Butt Weld Fittings are bevelled as per ANSI B 16.25 for thickness over 2 mm  
unless or otherwise stated. fittings of less than 2 mm. thickness are with plain ends

Material Identification : Although Quality of Material is etched/stamped on each Fitting Colour Strips can be  
painted for - easy identification as under.

RED : S. S. 316 . BLUE : S. S. 304 GREEN : S. S. 316 L

YELLOW : S. S. 304 L BLACK : S. S. 321

VEEKAY Butt weld Fittings are also available in Copper, Aluminium, Monal, Ni 200 & other Special Alloys  
VEEKAY also under takes manufacturing of Pipe coil (of any thickness and any diameter up to 6" Nom Bore),  
Expansion Joints Expansion bellows Heat exchanger U Tube bending and any other Short/Long Radius  
Complicate Pipe bending Jobs.

Please Contact for Further Information.

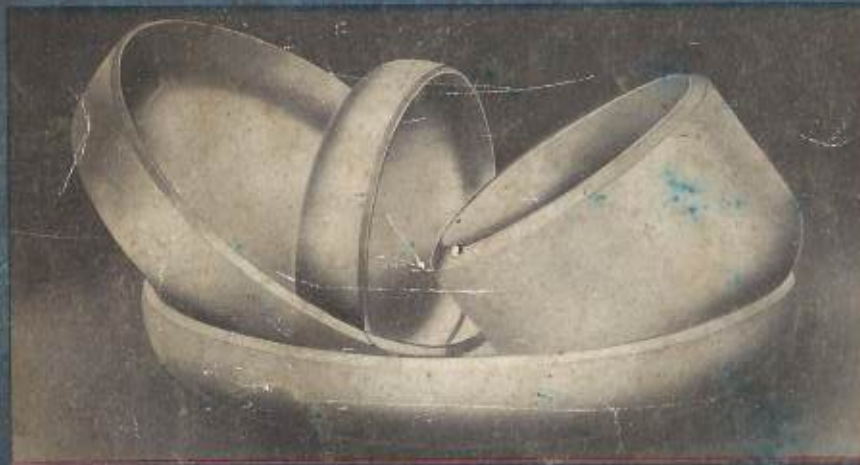
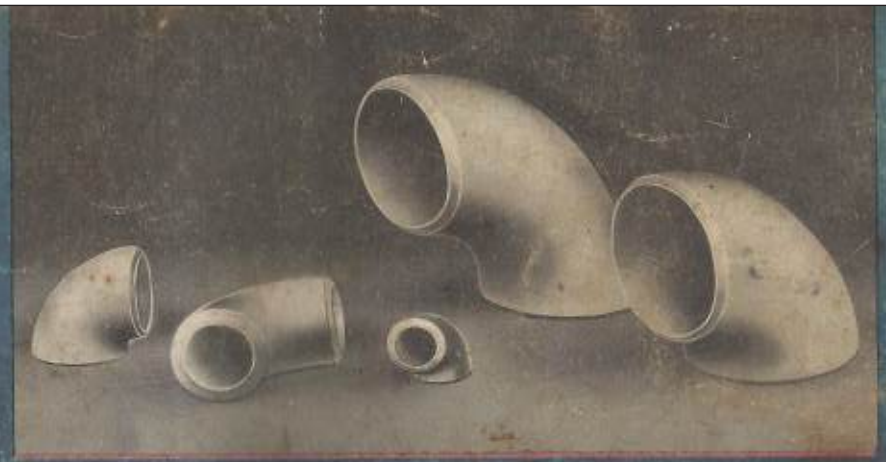
★ Heat Treatment  
(Optional)

## VEEKAY INDUSTRIES

Office & Works : Kopergaon Estate, Stable No. 1, Gala No. 5-6

Motisha Lane, Mazgaon BOMBAY 400 010, Phone: 8722194

Branch: 127, Todi Industrial Estate, 316, N. M. Joshi Marg, BOMBAY 400 011



# VEEKAY INDUSTRIES

KOPERGAON ESTATE, SHED NO. 1, GALA NO. 5/6,  
MOTISHA LANE MAZGAON, BOMBAY - 400 010

PHONE: 8722194